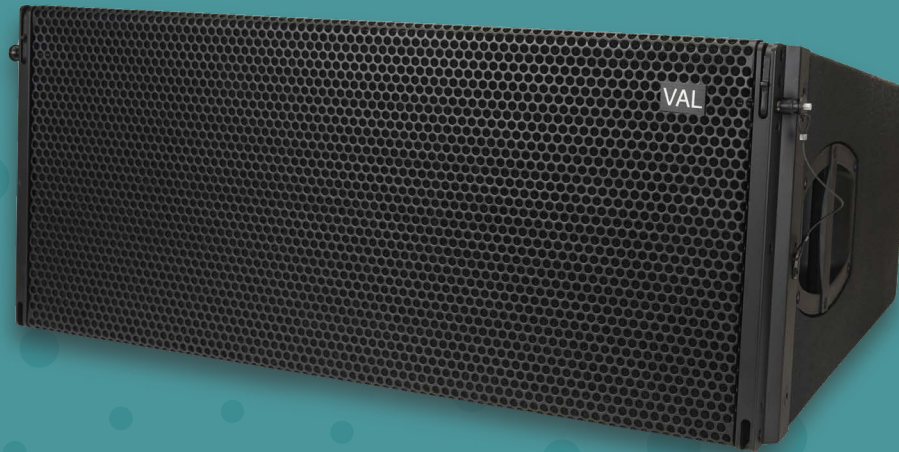


VLA212HP

High Performance
Line Array Loudspeaker

VALaudio

Die Liebe zur Musik



OVERVIEW

The VAL VLA212HP is a powerful dual 12" 2-way passive line array loudspeaker, purpose-built to deliver uncompromising performance in the most demanding live sound applications. Designed for both touring sound systems and fixed installations, the VLA212HP combines high output capability, precise coverage control, and pristine sound clarity in a compact yet rugged enclosure.

At its core, the system features two high-power 12" LF drivers that provide exceptional low-mid energy and punch, seamlessly paired with a high-efficiency 3" neodymium HF compression driver mounted on a custom waveguide. This driver combination ensures extended frequency response, low distortion, and the ability to project clear, intelligible audio over long distances with uniform horizontal dispersion.

With its integrated rigging system, the VLA212HP is engineered for ease of deployment, offering safe and quick setup for scalable vertical array configurations. Its robust birch plywood cabinet, finished with a durable textured coating and protected by a heavy-duty steel grille, makes it fully road-ready for rental and touring use while maintaining a refined aesthetic for installation projects.

KEY FEATURES

- Dual 12" high-power LF drivers for extended low-mid punch and depth
- High-efficiency 3" neodymium HF compression driver with precision waveguide for articulate high-frequency projection
- 140 dB peak SPL output, ensuring powerful performance for large-scale events
- 90° (H) x 10° (V) coverage pattern, optimized for line array deployment and consistent audience coverage
- Integrated rigging hardware for quick, safe, and flexible array configurations
- Tour-grade construction with premium birch plywood enclosure and reinforced steel grille for maximum durability
- Compact design delivering high output-to-size ratio, ideal for both portable and permanent setups

APPLICATIONS

- Touring and rental PA systems
- Arenas, stadiums, and large-scale outdoor events
- Concert halls, auditoriums, and theatres
- Festivals and live entertainment venues
- High-performance fixed installations in clubs and houses of worship

VLA212HP

High Performance
Line Array Loudspeaker

VALaudio

Die Liebe zur Musik



SPECIFICATIONS

| | |
|-----------------------------|---|
| Type | 2-way passive line array loudspeaker |
| Power Handling | 1200W RMS / 2400W Program / 4800W Peak |
| Nominal Impedance | 4Ω |
| Frequency Response (-10 dB) | 45Hz – 20kHz |
| Average Sensitivity (1W/1m) | 103dB |
| Maximum SPL | 134dB continuous / 137dB programme / 140dB peak |
| Coverage Pattern (H x V) | 90° × 10° |
| LF Drivers | 2 × 12" (3" VC) high-power ferrite drivers |
| HF Driver | 1.5" exit, 1 x 3" (75mm) Diaphragm, neodymium Compression Driver on Waveguide |
| Crossover | Internal passive |
| Enclosure Material | Premium birch plywood, textured black finish |
| Connectors | 2 x speakon NL4, (1+1- input, 2+/2- thru) |
| Rigging Hardware | Integrated rigging system |
| Dimensions (W x H x D) | 875 × 360 × 528 mm |
| Net Weight | 40 Kg |

SUMMARY

The VAL VLA212HP is a true workhorse for professional sound reinforcement, delivering exceptional power, clarity, and coverage in a robust and reliable design. Whether used in a large touring rig or permanent installation, it provides consistent, high-fidelity performance trusted by professionals across the live sound industry.