

# DSP48

## Loudspeaker Management System

VAL audio

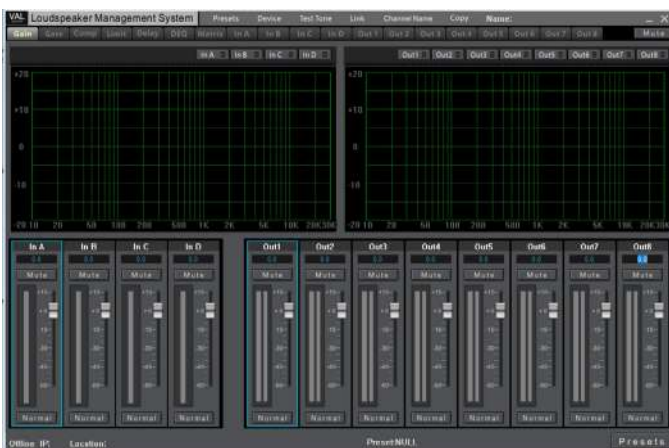
Die Liebe zur Musik



### OVERVIEW

VAL audio DSP48 is a premium and comprehensive loudspeaker management system that offers high-end hardware, extended processing capacity and fully featured control software. DSP48 is feature loaded with easy to use interface either directly from the unit or via VAL control software. It is ready to handle the most challenging projects or touring applications. When paired with other VAL audio equipment speakers, amplifiers and microphones the DSP48 offers incredible performance and ease of use, thanks to the custom presets, multitude of features and easy to use control software.

### VAL AUDIO CONTROL SOFTWARE



### KEY FEATURES

- Premium 4 In x 8 Out Networkable Loudspeaker Management System
- Top of the line ADI SHARC 21489 400MHz 32/40-bit floating-point DSP with 96KHz sampling rate
- On each input: Dynamic EQ, Delay, Gain, Noise gate, HPF & LPF and 10 filters
- On each output:
  - Routing, Delay, Gain, HPF and LPF filters (up to 48dB/oct),
  - 10 filters (PEQ, Shelving, Allpass, Bandpass),
  - Peak Stop Limiter and Compressors (Threshold, Attack, Release, Ratio)
- Built-in sine, White noise, noise-splitting signal generator for use as test signal
- Complete Matrix routing of inputs and outputs
- Easy to use comprehensive VAL DSP control software (Windows only)
- Multiple connection possible Ethernet + USB + RS232 + RS485 and GPIO port, open protocol for third-party control

# DSP48

## Loudspeaker Management System

**VAL** audio

Die Liebe zur Musik



### SPECIFICATIONS

Input / Output	4 in x 8 out
THD + Noise	<0.0025%
S/N	>112dBA (A-Weighted)
Frequency Response	+/-0.5dB (20Hz~20kHz)
AD & DA Converters	24bit-96kHz
Max Input/Output Level	+20dB
Parametric Equalization	Input 10-band, Output 10-band
Filter Type	FIR / PEQ / Low-Shelf / Hi-Shelf / ALL PASS
Crossover Section HPF/LPF	Butterworth 6/12/18/24/36/48dB per octave Bessel 6/12/18/24/36/48dB per octave Linkwitz-Riley 12/24/36/48dB per octave
Mini fixed Delay	<2ms
Delay	Input and Output Delay up to 1000ms
Power	~220V / 50 Hz
Power Consumption	<20W
Device Presets	User Presets: 23
Dimension (WxDxH)	485mm x 210mm x 45mm
Net Weight	3 Kg